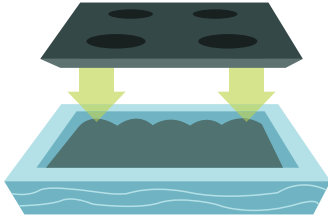


Thank you for purchasing
TREEDIAPER®
For best results, please follow
these procedures to install and use
your TreeDiaper® product!

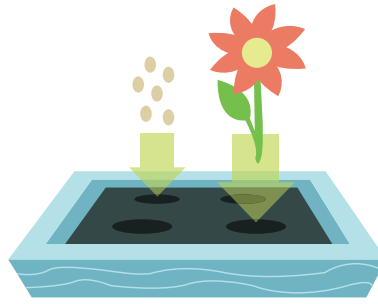
TreeDiaper® garden mat INSTRUCTIONS

For Garden Beds

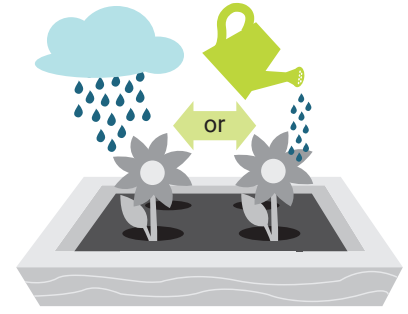
A) Using garden mat in a to-be-planted garden bed.



1. Place the garden mat as soon as possible with darker side up to begin catching and storing rain and snow for your garden.

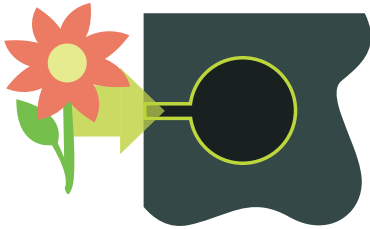


2. Simply plant into the pre-cut holes of the garden mat, and along the edges if space allows.



3. Rain or irrigation will keep plants watered. If soil becomes dry, water as usual.

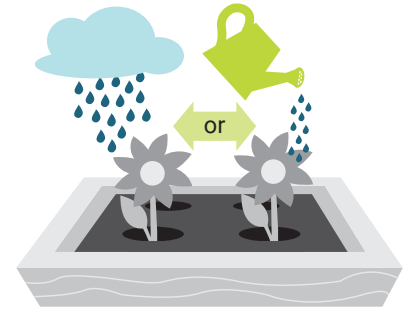
B) Using garden mat when garden is already planted (DURING WET SEASON)



1. If your garden is already planted, you may place a dry garden mat around existing plants using the cut slits in the material.



2. If the spacing is not right for your plants, do not cut or stretch the garden mat. Instead, leave a spot empty and/or plant outside the edge of the mat.

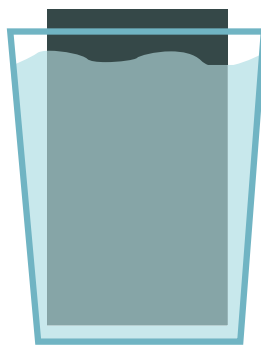


3. Water as often as you usually would for the first two weeks, then water only when the soil is dry.

C) Using garden mat when garden is already planted (DURING DRY SEASON)

1. Soak the garden mat in a 5 gallon bucket filled with water at least 5 hours or overnight.

2. Follow steps from Procedure B using the soaked garden mat.



NOTE:

- **Always place the mat with the darker black woven side facing up!**
- Do not place any soil, dirt, fine sand, compost, or iron-based sticks or tomato cage on top of garden mats. This may result in the loss of functionalities of garden mats.
- Covering with mulch, pine needles, or leaves is recommended.
- Direct contact of fertilizers with the material in use or in storage may temporarily or permanently affect the performance of the product.
- Do not poke the garden mat with sticks. Damage to the surface integrity of the garden mat may decrease the functionality of the product.

If you have any questions, please email info@treediaper.com.

Version 2.0.17. Updated on 04/03/18

D) Using garden mat with a combination drip irrigation system

1. Follow procedure A or B.

2. Let drip irrigation water the top of the mat.

